



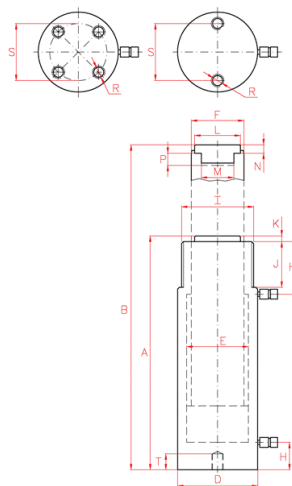
D Double acting cylinders

- ✓ Capacity from 10 to 550 Tn, stroke up to 300 mm.
- ✓ For push and pull applications.
- ✓ For heavy duty applications, high precision and involving high cycle life.
- ✓ Guide and sealing system of highest quality.
- ✓ Internal safety valve to prevent accidental over-pressure.
- ✓ Collar threads, piston end threads and base mounting holes for easy fixing and pull operations.
- ✓ Optional tilting saddles.
- ✓ Compatible with SM Accessories.
- ✓ Also available double acting high tonnage cylinders DDR.



Technical Information

Capacity	Stroke	Model	Capacity (kN)		Oil Cap.	Closed Height	Weight
			Push	Pull			
Tn	mm	LARZEP			cm ³	mm	Kg
10	160	D01016	109	20	255	310	6,4
	250	D01025	109	20	398	400	8,0
	320	D01032	109	20	509	470	9,5
20	160	D02016	214	53	499	320	11,7
	250	D02025	214	53	779	410	14,5
	320	D02032	214	53	997	480	16,8
30	60	D03016	303	68	707	335	18,9
	320	D03032	303	68	1.413	495	26,6
50	160	D05016	486	72	1.134	335	30,8
	320	D05032	486	72	2.267	510	44,8
75	160	D07516	712	140	1.661	338	42,0
	320	D07532	712	140	3.322	512	60,6
100	160	D10016	911	189	2.123	339	51,8
	320	D10032	911	189	4.245	509	84,1
150	50	D15005	1.380	370	1.005	258	66
	150	D15015	1.380	370	3.015	378	90
	300	D15030	1.380	370	6.029	528	119
200	50	D20005	2.156	560	1.570	274	105
	150	D20015	2.156	560	4.710	394	151
	300	D20030	2.156	560	9.420	544	191
350	50	D35005	3.368	1.014	2.454	299	189
	150	D35015	3.368	1.014	7.359	419	247
	300	D35030	3.368	1.014	14.718	569	346
550	50	D55005	5.519	1.714	4.020	383	396
	150	D55015	5.519	1.714	12.058	518	504
	300	D55030	5.519	1.714	24.116	668	625



INDUSTRY LEADERS IN CONTROLLED BOLTING SOLUTIONS



HTL Australasia Pty Ltd
 466 Victoria Road
 Malaga, WA 6090
 Western Australia

Telephone: +61 (0) 8 9249 3980

Email: info@htl-australasia.com

Visit: www.htl-australasia.com

