



SATM Single acting aluminium cylinders

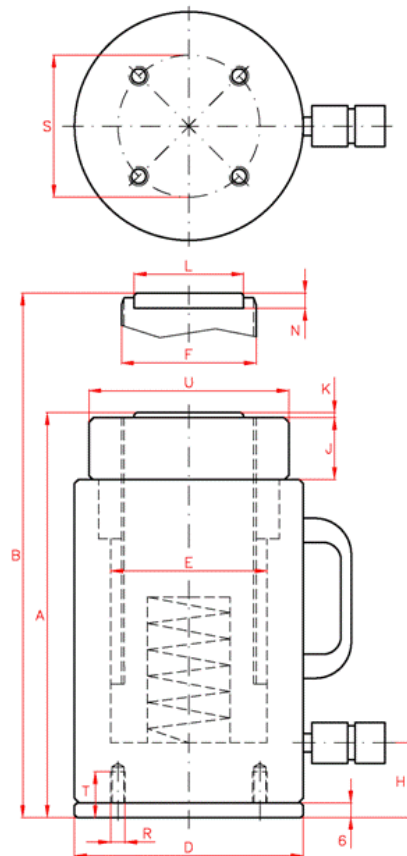
- ✓ Capacity from 30 to 200 Tn, stroke up to 300 mm.
- ✓ Spring return. Lock nut tested under 50% overload.
- ✓ Mechanical end of stroke gland avoids over travel at full pressure.
- ✓ Made out of high strength aluminium alloy.
- ✓ All aluminium parts are treated to improve resistance and extend working life.
- ✓ Light weight. Over 40% weight reduction when compared with steel equivalent.
- ✓ Fitted with steel base plate for wear resistance.
- ✓ The lock nut holds the load mechanically for long periods of time.
- ✓ Optional tilting saddles.
- ✓ Not suitable for high cycle applications.



LARZEP[®]
HYDRAULIC

Technical Information

Capacity		Stroke mm	Model LARZEP	Oil Cap. cm ³	Closed Height	Weight
Tn	kN					
30	303	50	SATM03005	221	204	4,9
		100	SATM03010	442	254	5,9
		150	SATM03015	663	304	6,9
		200	SATM03020	884	354	7,9
		250	SATM03025	1.104	404	8,9
		300	SATM03030	1.325	454	9,8
50	487	50	SATM05005	355	216	9,4
		100	SATM05010	709	266	11,1
		150	SATM05015	1.063	316	12,8
		200	SATM05020	1.418	366	14,6
		250	SATM05025	1.772	416	16,3
		300	SATM05030	2.127	466	18,0
100	911	50	SATM10005	663	258	18,0
		100	SATM10010	1.326	308	21,0
		150	SATM10015	1.989	358	24,1
		200	SATM10020	2.652	408	27,1
		250	SATM10025	3.315	458	30,1
		300	SATM10030	3.978	508	33,2
140	1.380	50	SATM14005	1.005	282	32,6
		100	SATM14010	2.011	332	37,5
		150	SATM14015	3.016	382	42,4
		200	SATM14020	4.021	432	47,4
		250	SATM14025	5.027	482	52,3
		300	SATM14030	6.032	532	57,2
200	1.946	50	SATM20005	1.418	296	52,7
		100	SATM20010	2.835	346	58,6
		150	SATM20015	4.253	396	64,5
		200	SATM20020	5.670	446	70,5
		250	SATM20025	7.088	496	76,4
		300	SATM20030	8.506	546	82,3



INDUSTRY LEADERS IN CONTROLLED BOLTING SOLUTIONS



HTL Australasia Pty Ltd
 466 Victoria Road
 Malaga, WA 6090
 Western Australia

Telephone: +61 (0) 8 9249 3980

Email: info@htl-australasia.com

Visit: www.htl-australasia.com

