



SP - SMP Low height single acting cylinders

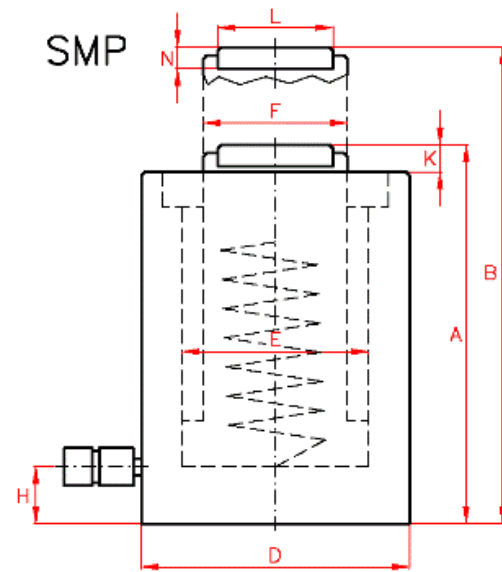
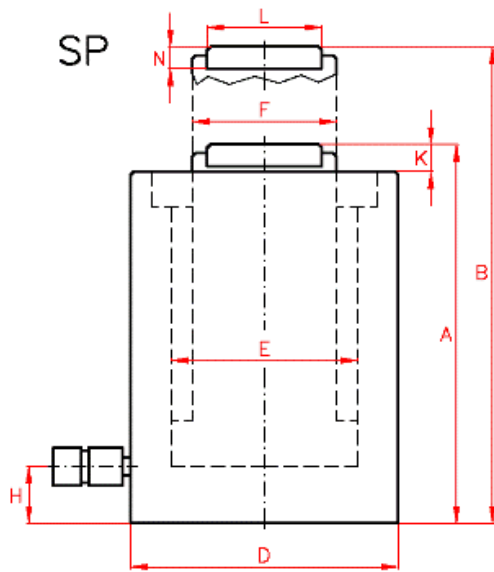
- ✓ Capacity from 10 to 100 Tn, stroke up to 150 mm.
- ✓ Two versions: SP for load return, and SMP for spring return.
- ✓ Low profile for use in confined spaces: machinery positioning, tool fastening, load tests.
- ✓ All models are black nitrated.
- ✓ Models from 30 to 100 Tn can mount optional tilting saddle.



LARZEP[®]
HYDRAULIC

Technical Information

Capacity		Stroke mm	Model	Oil Cap. cm ³	A mm	B mm	D mm	E mm	F mm	H mm	K mm	L mm	N mm	Area cm ²	Weight kg	With Tilting Saddle	
Tn	kN															A	Model
10	109	40	SP01004	64	89	129	66	45	36	14*	2	-	-	16	3	-	-
20	214	40	SP02004	125	101	141	90	63	56	14*	2	-	-	31	5	-	-
30	303	60	SP03006	265	125	185	102	75	60	14*	2	45	11	44	8	150	AZ0401
50	486	60	SP05006	425	125	185	127	95	80	16*	2	61	12	71	12	152	AZ0402
100	911	60	SP10006	796	141	201	175	130	110	26	2	88	14	133	25	174	AZ0404
		150	SP10015	1.990	254	404	175	130	110	26	2	88	14	133	43	287	AZ0404



INDUSTRY LEADERS IN CONTROLLED BOLTING SOLUTIONS



HTL Australasia Pty Ltd
 466 Victoria Road
 Malaga, WA 6090
 Western Australia

Telephone: +61 (0) 8 9249 3980

Email: info@htl-australasia.com

Visit: www.htl-australasia.com

