



T - TE - TD Pull cylinders

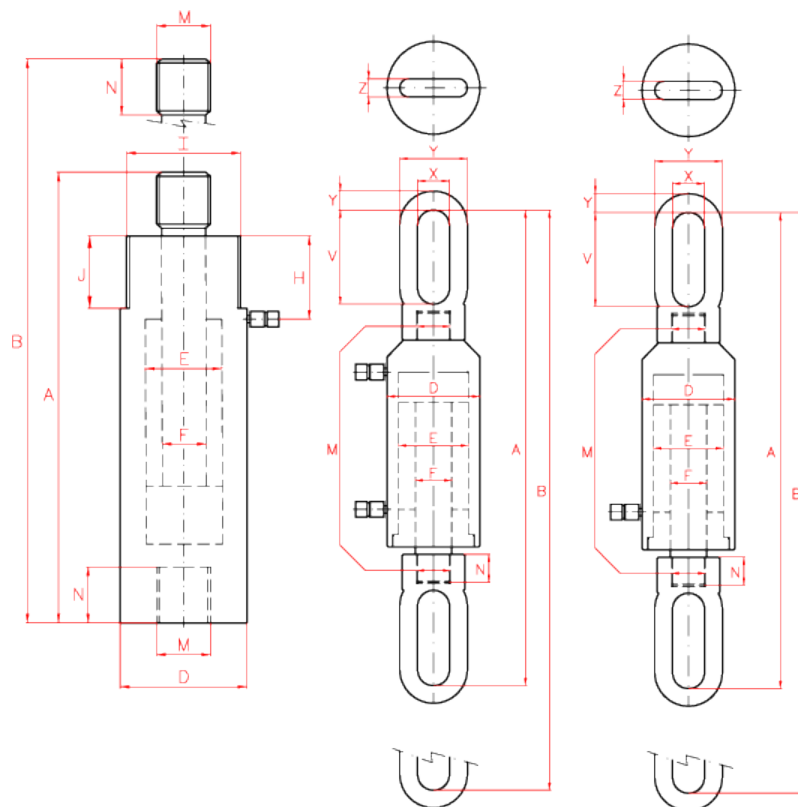
- ✓ Capacity from 5 to 50 Tn, stroke up to 150 mm.
- ✓ T and TE models are spring return. TD models are Double acting.
- ✓ For pulling applications: to hook and join plates for welding, tensioning cables, etc.
- ✓ Optional rubber rod cover for piston protection extends cylinder life.
- ✓ Optional telescopic metallic rod cover especially suitable for welding applications.
- ✓ T series pull cylinders are available as options for the CA series maintenance sets. Plunger and base threads match the CA series accessories



LARZEP[®]
HYDRAULIC

Technical Information

Capacity		Stroke mm	Model LARZEP	Oil Cap. cm ³	Closed Height	Weight kg
Tn	kN					
50	486	50	STX05005	355	125	11
90	911	45	STX09004	597	137	22
140	1.380	45	STX14004	905	148	39
220	2.156	45	STX22004	1.413	155	62
350	3.468	45	STX35004	2.208	178	111
430	4.227	45	STX43004	2.771	184	126
550	5.520	45	STX56004	3.618	192	193
670	6.600	45	STX67004	4.330	236	259
880	8.620	45	STX88004	5.655	268	482
1.100	10.905	45	STX110004	7.157	295	532



INDUSTRY LEADERS IN CONTROLLED BOLTING SOLUTIONS



HTL Australasia Pty Ltd
 466 Victoria Road
 Malaga, WA 6090
 Western Australia

Telephone: +61 (0) 8 9249 3980

Email: info@htl-australasia.com

Visit: www.htl-australasia.com

