



EvoTorque 2[®]

The unique 'intelligent joint sensing' technology continuously measures the joint during tightening and, when necessary, employs dynamic braking to avoid torque over-shoot due to motor inertia.

The EvoTorque[®] 2 can apply torque accurately over a wide range of joint rates from hard (high torque rate) through to soft (low torque rate). All EvoTorque[®] tools are highly tolerant of supply voltage and frequency variation. The EvoTorque[®] 2 has the ability to memorise multiple targets, work IDs, user IDs and readings. The tool has three modes of operation: Torque, Torque and Angle and Torque Audit.

The unique Audit Mode is a sophisticated feature for testing pre-tightened bolts with minimal impact on the original fastening torque and can provide quality control data for monitoring joint performance over time.

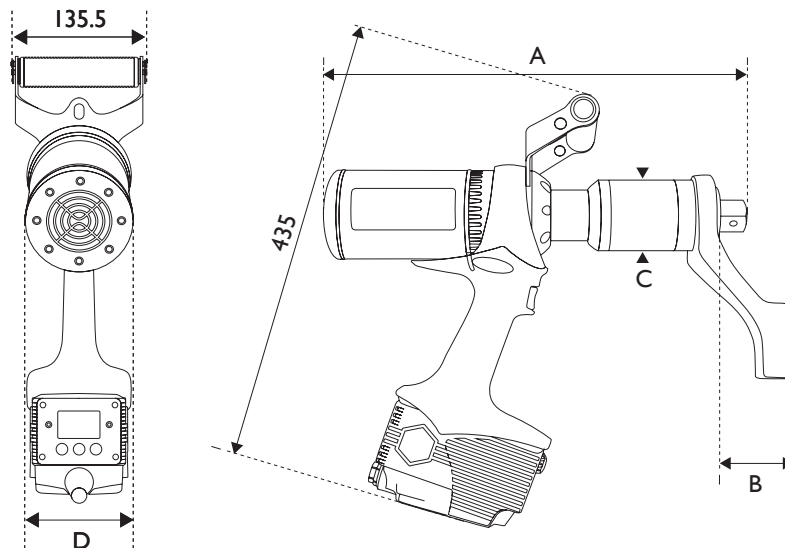
Features and Benefits

- ✓ Operating range from 100 Nm - 7000 Nm
- ✓ Versions for 110V or 230V
- ✓ Factory calibrated to $\pm 3\%$
- ✓ USB and Bluetooth[®] 4.0 data transfer
- ✓ 3000 reading memory, time and date stamped
- ✓ PC software for data management and tool configuration
- ✓ Comfortable and safe to use
- ✓ Reaction forces are contained by the reaction bar
- ✓ Several reaction bar styles available
- ✓ Correct torque output from hard through to soft joints
- ✓ Indicator on the tool clearly signals that the correct Torque or Angle has been achieved



Technical Information

| Model | Voltage | Square | Range | | Speed | Weight | Reaction | A | B | C | D |
|------------------|---------|--------|------------|------------|-------|--------|----------|-----|-----|-----|-----|
| | V | Inch | Nm | lb.ft | rpm | kg | kg | mm | mm | mm | mm |
| ET2-72-1000-110 | 110 | 3/4" | 100 - 1000 | 74 - 738 | 21 | 10.4 | 1.5 | 390 | 77 | 72 | 100 |
| ET2-72-1000-230 | 230 | 3/4" | 100 - 1000 | 74 - 738 | 21 | 10.4 | 1.5 | 390 | 77 | 72 | 100 |
| ET2-72-1350-110 | 110 | 3/4" | 135 - 1350 | 100 - 1000 | 17 | 10.4 | 1.5 | 390 | 77 | 72 | 100 |
| ET2-72-1350-230 | 230 | 3/4" | 135 - 1350 | 100 - 1000 | 17 | 10.4 | 1.5 | 390 | 77 | 72 | 100 |
| ET2-72-2000-110 | 110 | 1" | 200 - 2000 | 147 - 1475 | 11 | 10.8 | 1.5 | 425 | 77 | 72 | 100 |
| ET2-72-2000-230 | 230 | 1" | 200 - 2000 | 147 - 1475 | 11 | 10.8 | 1.5 | 425 | 77 | 72 | 100 |
| ET2-92-2700-110 | 110 | 1" | 270 - 2700 | 200 - 2000 | 8.5 | 12.9 | 2.6 | 450 | 75 | 92 | 100 |
| ET2-92-2700-230 | 230 | 1" | 270 - 2700 | 200 - 2000 | 8.5 | 12.9 | 2.6 | 450 | 75 | 92 | 100 |
| ET2-92-4000-110 | 110 | 1" | 400 - 4000 | 295 - 2950 | 6 | 16.8 | 2.6 | 450 | 75 | 92 | 100 |
| ET2-92-4000-230 | 230 | 1" | 400 - 4000 | 295 - 2950 | 6 | 16.8 | 2.6 | 450 | 75 | 92 | 100 |
| ET2-119-6000-110 | 110 | 1 1/2" | 270 - 6000 | 445 - 4425 | 8.5 | 12.9 | 2.6 | 480 | 95 | 119 | 115 |
| ET2-119-6000-230 | 230 | 1 1/2" | 600 - 6000 | 445 - 4425 | 8.5 | 12.9 | 2.6 | 480 | 95 | 119 | 115 |
| ET2-119-7000-110 | 110 | 1 1/2" | 700 - 7000 | 515 - 5150 | TBA | TBA | TBA | TBA | TBA | TBA | TBA |
| ET2-119-7000-230 | 230 | 1 1/2" | 700 - 7000 | 515 - 5150 | TBA | TBA | TBA | TBA | TBA | TBA | TBA |



PLEASE NOTE: Figures provided are for guidance only, please refer to individual tool charts. All data is given in good faith and without acceptance of responsibility on the part of HTL.

INDUSTRY LEADERS IN CONTROLLED BOLTING, FLANGE WORKING AND PORTABLE MACHINE SOLUTIONS



HTL Australasia Pty Ltd
 466 Victoria Road
 Malaga, WA 6090
 Western Australia

Telephone: +61 (0) 8 9249 3980
 Email: info@htl-australasia.com
 Visit: www.htl-australasia.com

