



# Norbar Torque Multipliers

## Handtorque Standard Series

Norbar 'Handtorque' Multipliers employ multiple stages of epicyclic gearing to give a wide range of torque outputs and ratios to suit most applications. Ratios quoted are always the torque multiplication ratio, not the velocity ratio as given from some competitor's products. For example, the velocity ratio may be 29.8:1 to give a torque multiplication of 25:1 +/-4%

## HT3 Torque Multipliers

The Handtorque Standard Series has a 5:1 torque multiplication ratio with guaranteed accuracy of at least +/- 4% and comes supplied with two reaction bar styles, for maximum versatility. Its robust construction means minimal maintenance and a long life span. The Handtorque Standard Series Torque Multiplier is also supplied in a carry case, making it ideal for inclusion in any heavy duty tool kit.

## Features and Benefits

- ✓ Continuous rotations
- ✓ Models available for almost every application
- ✓ Forward and reverse operation
- ✓ Low operator fatigue
- ✓ Quiet, non impacting or pulsing
- ✓ Reliability +/- 5%
- ✓ A variety of reaction styles for maximum versatility



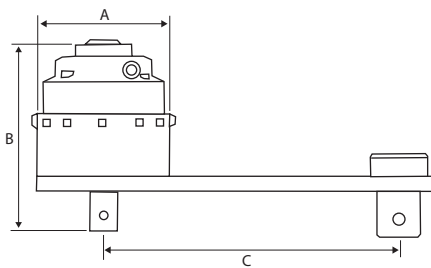
# Technical Information

Model	Range		Ratio	Input Square	Output Square	A	B	C min	D max	Total Weight
	Nm	lb.ft		in	in	mm	mm	mm	mm	Kg
5/5	3400	2500	5:1	3/4"	1	119	143	86	264	4.7
5/25 AWUR	3400	2500	25:1	1/2"	1	119	168	86	264	7.5
6/5	3400	2500	5:1	3/4"	1 1/2	119	145	86	264	4.7
6/25 AWUR	3400	2500	25:1	1/2"	1 1/2	119	172	86	264	7.5
7/5	6000	4500	5:1	3/4"	1 1/2	144	175	146	333	8.1
7/25 AWUR	6000	4500	25:1	1/2"	1 1/2	144	202	146	333	10.7
7/125 AWUR	6000	4500	125:1	1/2"	1 1/2	144	226	146	333	12.2
9/25 AWUR	9500	7000	125:1	3/4"	1 1/2	184	201	171	351	17.4
9/125 AWUR	9500	7000	125:1	1/2"	1 1/2	184	221	171	351	18.9
11/25 AWUR	20000	14700	25:1	3/4"	2 1/2	212	266	-	500	30.1
11/125 AWUR	20000	14700	125:1	1/2"	2 1/2	212	294	-	500	32.1
13/125 AWUR	47500	35000	125:1	3/4"	2 1/2	315	379	-	-	95.2

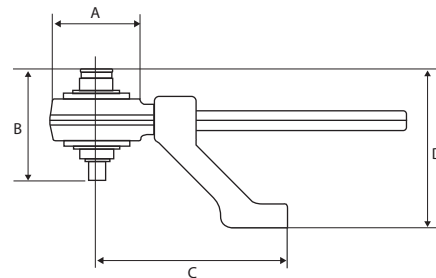
## HT3 Technical Specification

Model	Range		Ratio	Input Square	Output Square	A	B	C	D	Total Weight
	Nm	lb.ft		in	in	mm	mm	mm	mm	Kg
HT3	1300	960	5:1	1/2"	3/4"	108	126	210	180	3.8
HT3 2700 Nm	2700	2000	5:1	3/4"	1"	108	128	210	186	3.8

### Standard Series



### HT3



PLEASE NOTE: Figures provided are for guidance only, please refer to individual tool charts. All data is given in good faith and without acceptance of responsibility on the part of HTL.

**INDUSTRY LEADERS IN CONTROLLED BOLTING, FLANGE WORKING AND PORTABLE MACHINE SOLUTIONS**



HTL Australasia Pty Ltd  
466 Victoria Road  
Malaga, WA 6090  
Western Australia

Telephone: +61 (0) 8 9249 3980  
Email: [info@htl-australasia.com](mailto:info@htl-australasia.com)  
Visit: [www.htl-australasia.com](http://www.htl-australasia.com)

