

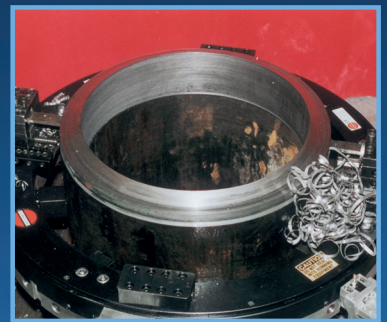


MS DL Ricci Clamshell Pipe Cutter Range

The DL Ricci™ MS or Mid-Size portable clamshell lathe weighs less than those in the the HD series but provide greater rigidity than machines in the NB series. Each of the machines within the MS series have a height of 3.03" (76.96 mm) and a width of 3.83" (97.28 mm). These dimensions provide increased manoeuvrability and greater clearance than the HD series. These portable split frame machines are capable of pipe cutting, beveling, facing, ID boring and OD turning on a wide range of wall thicknesses.

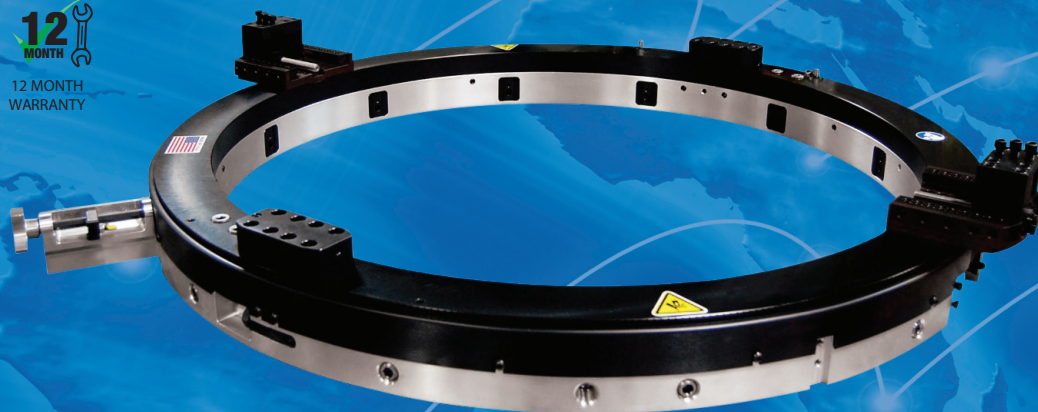
Features and Benefits

- ✓ 11 Standard models cover a range of 4.125" (104.8 mm) to 48.25" (1225.6 mm OD)
- ✓ Pneumatic and hydraulic drive options provide increased versatility
- ✓ Fully adjustable heavy duty bearing design provides greater serviceability
- ✓ Stepped and keyed gear clamps equipped with a through bolt provide a positive fit at each assembly joint
- ✓ Several different drive options are available to best position the motor for a specific machining application
- ✓ MS series clamshells accept a wide range of accessories to increase performance and expand capabilities
- ✓ Locator extensions are compatible with the NB series clamshells



Included as Standard with each machine

- ✓ Clamshell body
- ✓ Locators & extensions covering the full range
- ✓ Slides
- ✓ Motor & Mounting
- ✓ Air Caddy
- ✓ Tool Kit
- ✓ Manual
- ✓ Shipping crate

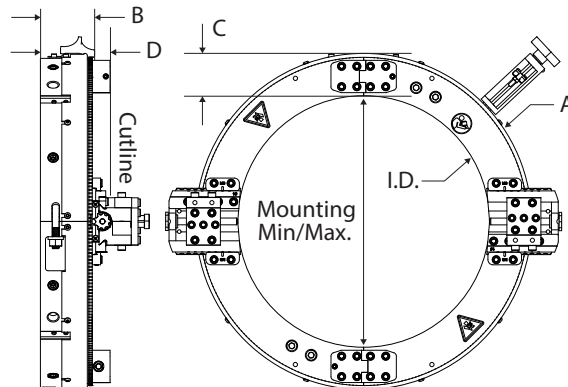


Technical Information

Specification

Model	Mounting Range		Machine ID		A		B		C		D*		Machine Weight	
	mm	Inch	mm	Inch	mm	Inch	mm	Inch	mm	Inch	mm	Inch	Kg	lbs
DLR-MS12	104.8 – 330.2	4.1 – 13.0	336.6	13.3	490.5	19.3	97.3	3.9	77.0	3.0	135.4	5.3	44.5	98.0
DLR-MS16	187.3 – 412.8	7.4 – 16.3	419.1	16.5	573.1	22.6	97.3	3.9	77.0	3.0	135.4	5.3	54.0	119.0
DLR-MS18	238.1 – 463.6	9.4 – 18.3	469.9	18.5	623.9	24.6	97.3	3.9	77.0	3.0	135.4	5.3	59.0	130.0
DLR-MS20	288.9 – 514.4	11.4 – 20.3	520.7	20.5	674.7	26.6	97.3	3.9	77.0	3.0	135.4	5.3	64.0	141.0
DLR-MS24	390.5 – 616.0	15.4 – 24.3	622.3	24.5	776.3	30.6	97.3	3.9	77.0	3.0	135.4	5.3	74.0	163.0
DLR-MS28	492.1 – 717.6	19.4 – 28.3	723.9	28.5	877.9	34.6	97.3	3.9	77.0	3.0	135.4	5.3	84.0	185.0
DLR-MS30	542.9 – 768.4	21.4 – 30.3	774.7	30.5	928.7	36.6	97.3	3.9	77.0	3.0	135.4	5.3	89.0	196.0
DLR-MS32	593.7 – 819.2	23.4 – 32.3	825.5	32.5	979.5	38.6	97.3	3.9	77.0	3.0	135.4	5.3	94.9	209.0
DLR-MS36	695.3 – 920.8	27.4 – 36.3	927.1	36.5	1081.1	42.6	97.3	3.9	77.0	3.0	135.4	5.3	104.9	231.0
DLR-MS36.5	708.0 – 933.5	27.9 – 36.8	939.8	37.0	1093.8	43.1	97.3	3.9	77.0	3.0	135.4	5.3	105.8	233.0
DLR-MS42	847.7 – 1073.2	33.4 – 42.3	1079.5	42.5	1233.5	48.6	97.3	3.9	77.0	3.0	135.4	5.3	120.0	264.0
DLR-MS48	1000.1 – 1225.6	39.4 – 48.3	1231.9	48.5	1385.9	54.6	97.3	3.9	77.0	3.0	135.4	5.3	134.4	296.0

* "D" dimension (or outline) may change with different tooling. Contact consultant for specifics.



PLEASE NOTE: Figures provided are for guidance only, please refer to individual tool charts. All data is given in good faith and without acceptance of responsibility on the part of HTL.

GLOBAL EXCELLENCE IN CONTROLLED BOLTING



HTL Australasia Pty Ltd
466 Victoria Road
Malaga, WA 6090
Western Australia

Telephone: +61 (0) 8 9249 3980
Email: info@htl-australasia.com
Visit: www.htl-australasia.com

