

STTL-SERIES SAFE T™ TORQUE LOCK

Hands-free torque wrench system



ENERPAC 

▼ Shown: STTLS Safe T™ Torque Lock



Hands-free torque wrench system



Safe T™ Torque Lock

The Safe T Torque Lock is suitable for all bolted applications from 190 Nm to 15.000 Nm using a heavy duty impact socket.

The patented mechanical locking system creates a hands-free torque wrench solution suitable for Enerpac only square drive tools.

Suitable for:

S-Series	RSQ-Series
S3000X	RSQ3000
S6000X	RSQ5000
S11000X	RSQ11000

Safety – Safe T™ Torque Lock

- Transforming Enerpac S-Series & RSQ-Series wrenches into a dedicated hands-free tool
- Improves operator safety during bolting operations by minimizing exposure to pinch points and high pressure hydraulic connections
- Grips securely to the application in any orientation, including inverted positions
- Minimizes drop hazards of falling tools
- Reduces operator fatigue on overreaching or awkward positioning of the tool.

Simplicity

- With one twist of the locking collar the Safe T Torque Lock grips onto the application, firmly holding the full tool weight in place
- Assembles onto the torque wrench with one push of the square drive quick release button for tightening or loosening
- Locking feature reduces the number of tool lifts dramatically.

Versatility

- Suitable for both S-Series & RSL-Series square drive wrenches
- Simple twist & lock mechanism is user friendly, easy to operate
- No additional loose components like reaction washers are needed.



▲ Hands-free torque wrench system: STTLS-model with S-Series torque wrench. The square drive of the wrench can easily be exchanged by the Safe T Torque Lock model.



Back-Up Spanners

To be used to stop back nut from turning during make up or break out. Two hexagon sizes in one tool.



Common Torque Lock Applications:

- Oil & Gas flanges
- Tower Crane installation
- Machine installation/assembly (Mining),
- Wind Tower installation etc.

Industries

- Oil & Gas, Petrochemical
- Wind Power Generation
- Mining
- Marine
- Manufacturing
- Rail and more

STTL Series

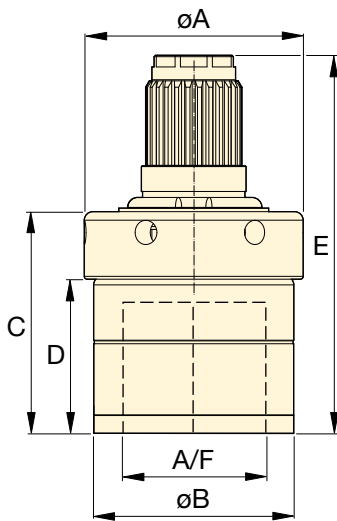


Hexagon Range (A/F):

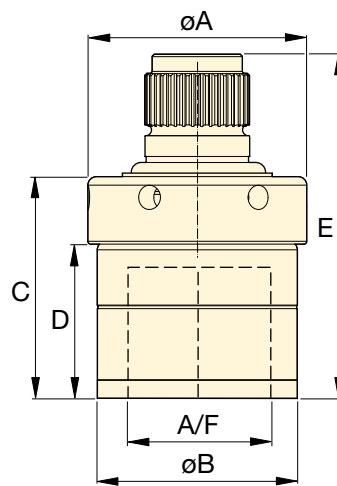
46 - 75 mm

Hexagon Range (A/F):

1¹³/₁₆ - 2¹⁵/₁₆ inch



STTLS
for S-Series Spline Fitting



STTLR
for RSQ-Series Spline Fitting



IMPORTANT:

Safe T Torque Lock not suitable for use on PTFE coated nuts.



Bolting Integrity Software

Enerpac Bolting Integrity Software Solutions play a key role in implementing and managing an Integrity Program for bolted connections.

The software offers Tool selection, Bolt Load calculations and Tool pressure settings, as well as a combined Application Data Sheet and Joint Completion Report. Custom Joint information can also be entered.

Hexagon Sizes A/F		For use with torque wrench model	Safe T™ Torque Lock Model Number		Dimensions (inch)					⚖️ (lbs)	Dimensions (mm)					⚖️ (kg)
(inch)	(mm)		For S-Series Spline Fitting	For RSQ-Series Spline Fitting	A	B	C	D	E		A	B	C	D	E	
1 ¹³ / ₁₆	46	S3000X	STTLS 31046	-	3.0	2.8	3.1	2.1	5.2	4,4	77	71	78	54	133	2,0
		RSQ3000	-	STTLR 31046					4.8	4,2					121	1,9
2 ³ / ₁₆	55	S3000X	STTLS 31055	-	3.7	3.4	3.3	2.3	5.4	6,6	93	86	83	58	138	3,0
		RSQ3000	-	STTLR 31055					5.1	6,4					130	2,9
-	60	S6000X	STTLS 61560M	-	3.9	3.6	3.4	2.5	5.9	8,2	99	92	86	62	150	3,7
		RSQ5000	-	STTLR 51560M					5.7	8,2					145	3,7
2 ⁹ / ₁₆	65	S6000X	STTLS 61565	-	4.2	3.9	4.2	2.9	6.8	11,7	107	100	108	74	172	5,3
		RSQ5000	-	STTLR 51565					6.6	11,9					168	5,4
2 ¹⁵ / ₁₆	75	S6000X	STTLS 61575	-	4.4	4.1	4.4	3.1	7.0	12,3	112	105	113	80	177	5,6
		RSQ5000	-	STTLR 51575					6.9	13,2					173	5,8
-	60	S11000X	STTLS 111560M	-	3.9	3.6	3.4	2.5	6.6	9,3	99	92	86	62	167	4,2
		RSQ11000	-	STTLR 111560M					6.1	9,3					156	4,2
2 ⁹ / ₁₆	65	S11000X	STTLS 111565	-	4.2	3.9	4.2	2.9	7.5	12,8	107	100	107	74	189	5,8
		RSQ11000	-	STTLR 111565					7.0	12,8					178	5,8
2 ¹⁵ / ₁₆	75	S11000X	STTLS 111575	-	4.4	4.1	4.4	3.1	7.7	13,2	112	105	113	80	195	6,0
		RSQ11000	-	STTLR 111575					7.2	13,2					183	6,0



THE RIGHT TOOL MAKES ALL THE DIFFERENCE

Enerpac bolting tools are put to work under the most intense and demanding conditions. That's why we never compromise. So you can rely on quality and precision every time for your controlled tightening and joint integrity applications.

As a global leader in high-pressure hydraulic tools, controlled force products and solutions for precision positioning of heavy loads, Enerpac products have moved and maintained some of the largest structures on earth. They are the industry standard in aerospace, infrastructure, manufacturing, mining, oil & gas, power generation and much more.

ELITE TOOLS. FOR ELITE PROFESSIONALS.

Controlled Tightening and Loosening



S-, W-, RSL-, DSX and HMT-Series Hydraulic Torque Wrenches



STTL-Series Safe T™ Torque Lock



Manual Torque Multipliers



Pneumatic and Electric Torque Wrenches



Cordless Torque Pumps



Electric Torque Pumps



Pneumatic Torque Pumps

Tensioning Tools



Power Generation Bolt Tensioners



HydraMax, General Purpose and Aquajack® Subsea Tensioners



Electric Tensioning Pumps



Pneumatic Tensioning Pumps



High-Pressure Hand Pumps

Joint Assembly & Joint Separation



Hydraulic Nut Cutters and Nut Splitters



Flange Alignment Tools



Flange Face Tool



Flange Spreaders



Valve Change-Out Tool Sets



Flange Puller Sets



www.enerpac.com